

# TOP VALVE <sup>\* PAT</sup>

## Back Pressure & Pressure Relief Valves

*Designed to Enhance the **ACCURACY** and **SAFETY** of Metering Pumps*



## Back Pressure/Anti-Siphon and Pressure Relief Valves

- Long life diaphragm
- Range of 0 - 150 PSIG
- Built-in air release and optional gauge port
- Available in PVC, CPVC, PVDF, polypropylene, Teflon, stainless steel, Alloy 20 and Hastelloy C
  - 7 sizes (1/4" - 2" NPT)
- Color coded handles indicate size at a glance



PRIMARY  
FLUID  
SYSTEMS  
INC.

# TOP VALVE <sup>\*PAT</sup>

## Back Pressure/Anti-Siphon and Pressure Relief Valves

### Description

This line of diaphragm style, back pressure/anti-siphon and pressure relief valves features a completely adjustable pressure range of 0 - 150 PSIG and a built-in air release to reduce priming difficulties. The valves are available in sizes from 1/4" through 2", eight materials of construction and offer a three year warranty. Socket weld, flanged or special threaded connections are available. Higher temperature and pressure valves are available on request.

- PVC, CPVC, PVDF, Teflon, polypropylene, stainless steel, Alloy 20 and Hastelloy C
- Teflon laminated to EPDM backer diaphragm
- Turn down handle limits pressure to 150 psig
- Color coded handles indicate size at a glance
- Optional built-in matching material gauge port

### Dimensional Information

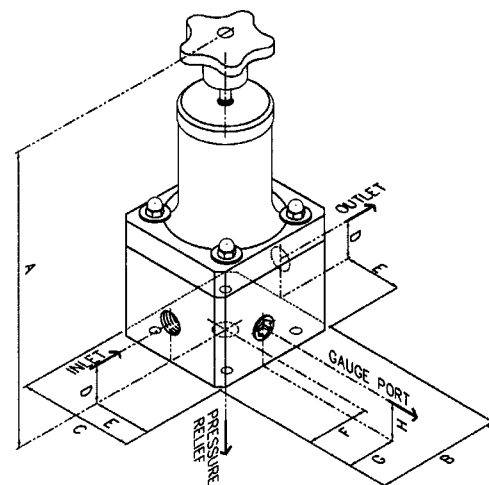
**Note:** Dimensions are the same for standard back pressure and pressure relief valves except as indicated below.

Valve Size	Overall Dimensions			Inlet / Outlet		Press. Relief	In/Out Port	Relief Port
	*A**	B	C	D**	E	F	NPT	NPT
1/4"	5.750	2.500	2.250	0.650	1.125	1.250	1/4"	1/4"
1/4" x 1/2" plastic	5.750	2.500	2.250	0.650	1.125	1.125	1/2"	1/2"
1/4" x 1/2" metal	5.750	2.500	2.250	0.650	1.125	1.125	1/2"	1/4"
1/2"	6.500	3.500	2.750	0.900	1.375	1.750	1/2"	1/2"
3/4"	6.500	3.500	2.750	0.900	1.375	1.750	3/4"	3/4"
1"	7.000	4.000	3.000	1.300	1.500	2.000	1"	1"
1 1/2"	7.750	4.125	3.250	1.687	1.625	2.063	1 1/2"	1"
2"	8.250	4.125	3.750	1.948	1.875	2.063	2"	1 1/2"

\* Dimensions are approximate for overall height based on valve factory set at 50 PSIG

\*\* For pressure relief plastic body valves add 0.25" to dimensions "A" and "D", except for 1 1/2" size

TOP VALVE  
Pressure Relief Valve



### Flow Rates

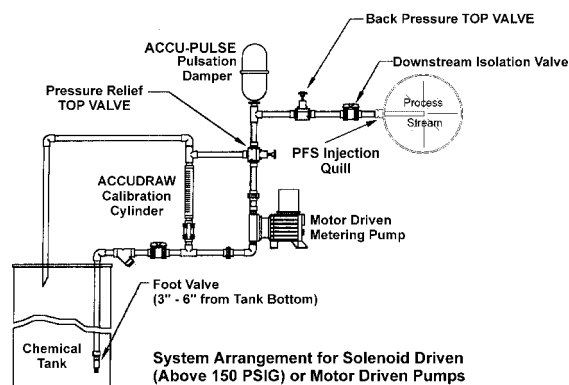
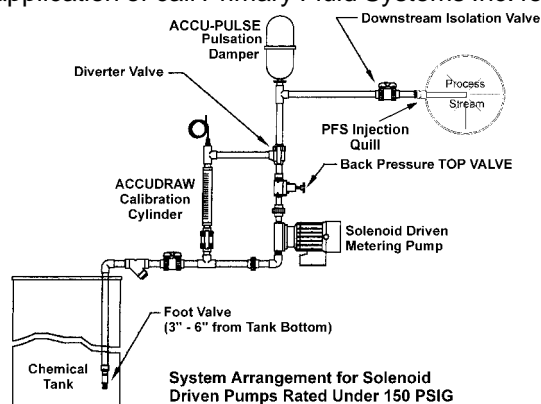
Flow capacity through TOP VALVE back pressure/anti-siphon and pressure relief valves under continuous flow conditions @ 50 PSIG with ambient temperature water.

Size	1/4"	1/4" / 1/2"	1/2"	3/4"	1"	1 1/2"	2"
Flow rate USGPM	2	2.5	5	6	11	25	40

**Note:** Capacities will increase with pressure. If pressure is doubled, flow rate will approximately double. For capacities of valves with pulsating flow, use approximately 1/3 of the given flow rates.

### Typical Installations

The installations below are typical installation examples only. Consult your engineering department for the appropriate installation of your application or call Primary Fluid Systems Inc. for advice.



Distributed By:



PRIMARY FLUID  
SYSTEMS INC.

Call Toll Free 1-800-776-6580

Tel: (905) 333-8743

Fax: (905) 333-8746

E-Mail: [primary@primaryfluid.com](mailto:primary@primaryfluid.com)

[www.primaryfluid.com](http://www.primaryfluid.com)

Distribution Territories Available

Registered Trade Mark of Primary Fluid Systems  
\*PAT 5,857,486/5,944,050

