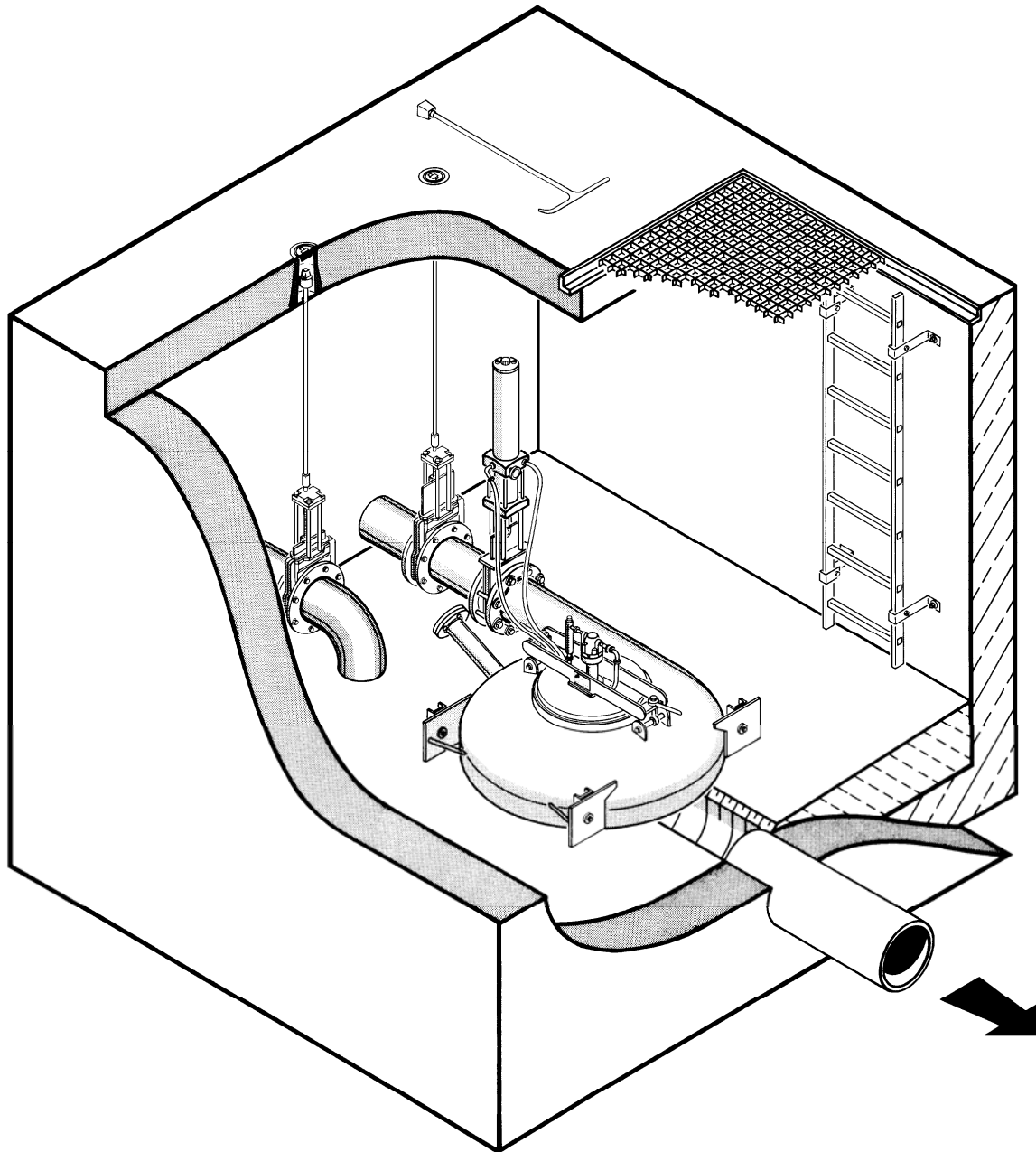


CSO/STORMWATER MANAGEMENT



 [®] HYDROVEX[®]

Turbo Flow Regulator



JOHN MEUNIER

HYDROVEX® TURBO FLOW REGULATOR

APPLICATION

The **HYDROVEX® Turbo** Flow Regulator is a turbine driven vortex flow regulator. It is a development of the well-known and proven vortex flow regulator technology. It retains all the precision and reliability that made the vortex unit widely popular.

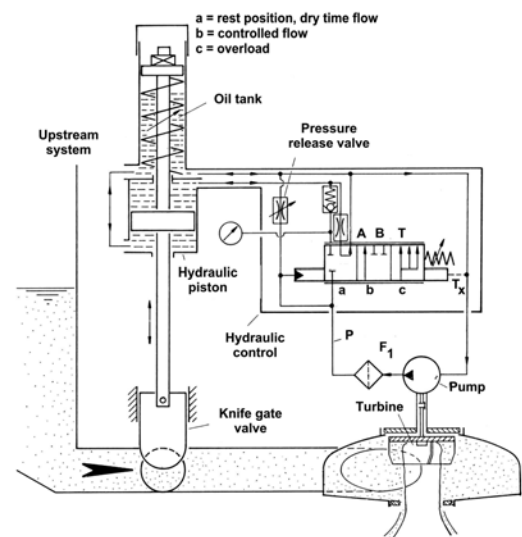
We designed the turbo-regulator to operate in continuous sanitary of combined flow. The **HYDROVEX® Turbo** Flow Regulator is particularly well suited for EQ tanks and storm tank outlets with low to average output flow values.

ADVANTAGES

The **HYDROVEX® Turbo** Flow Regulator operates without external energy or electrical power. The unit acts only in high flow conditions, when the flow inside the vortex portion is enough to activate the hydraulic circuit that will pilot the upstream knife gate valve. The **HYDROVEX® Turbo** Flow Regulator advantages are:

- Adjustment of the controlled flow
- Constant trough flow
- No external energy
- Extreme reliability based on the use of a vortex flow regulator
- Adjustment button to modify the flow control set point
- Can handle extremely small flows with large open port area
- 304 stainless steel construction

Figure 1: Hydraulic power system



OPERATION

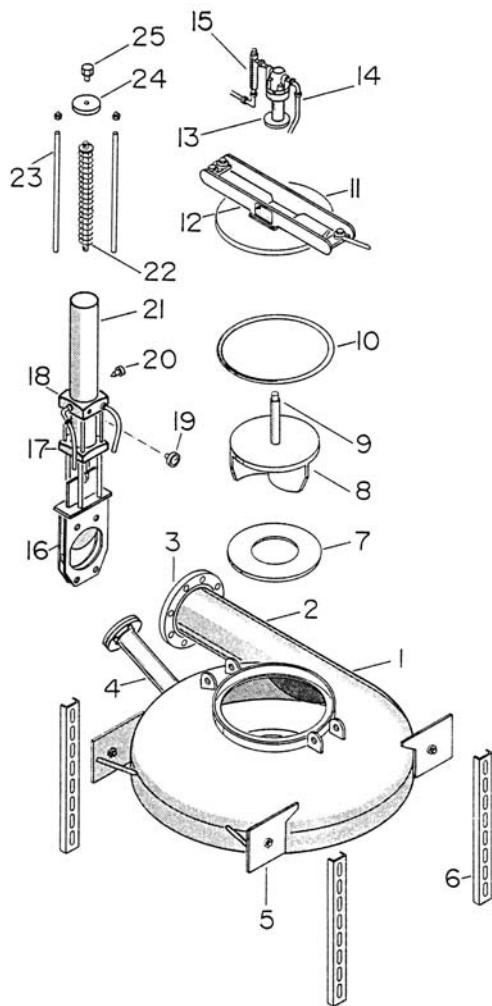
Figure 1 shows the simplicity of the hydraulic control circuit. The flow enters the vortex flow control unit tangentially. In the upper portion of the vortex chamber, we have added a plastic turbine, flat and very light. The turbine shaft passes through the removable cover that is air and watertight. The shaft connects to a hydraulic pump. The pump uses colza oil (biodegradable and non-polluting) from a small reservoir, located on top of the regulating knife gate valve.

In dry time conditions, the vortex regulator fills up only partially. The turbine does not feel any water and the knife gate valve remains completely retracted, leaving a full port opening for the flow and debris to go through.

When high flow conditions occur, the turbine activates the hydraulic circuit. It activates the oil through a filter into the spring-loaded piston on top of the knife gate valve.

All the piston elements are proprietary equipment of **John Meunier Inc.** The oil pressure activates the synchronized low-pressure piston, that drives a free moving knife gate valve with parallel seats. The gate will close until the number of rotations of the turbine, by minute, equals the selected flow to regulate. When the flow recesses to a lesser value, the turbine starves and the gate opens progressively.

The entire unit is a feedback flow control system. The combination of the vortex unit with the turbine allows at the same time to measure the flow and generate the flow regulating energy. The dynamic behavior of the hydraulic control circuit is optimized in our laboratory with the help of a computer program. Facing radical change of conditions, for example passing from no flow to maximum flow instantly, the **HYDROVEX® Turbo** Flow Regulator can stabilize its flow condition in less than a minute. This great dynamic stability is based on the large energy transmission capacity of the hydraulic circuit in case of blockage.



1. Vortex regulator
2. Inlet Pipe
3. Inlet Flange
4. Pressure Sensor (Option)
5. Support attachments
6. Supports
7. Removable orifice
8. Turbine
9. Turbine driven shaft
10. Cover seal
11. Plastic cover
12. Cover support
13. Oil pump
14. Flexible pipes
15. Oil filter
16. Knife Gate
17. Hydraulic piston
18. Hydraulic Block control
19. Pressure gauge
20. Flow adjustment
21. Colza oil tank
22. Spring
23. Tension rods
24. Tank cover
25. Isolation bolt

Figure 2: Exploded view of the HYDROVEX® Turbo Flow Regulator

The unit presents an exceptional security potential. If the hydraulic system fails, for instance following a hose breaking or a misconnection of the hoses, the vortex unit portion of the **HYDROVEX® Turbo Flow Regulator** will act as an “emergency brake”. If the knife gate hits a rock during the closing process, the piston includes a pressure release valve that will react and open up the valve for a while, just enough for the rock to go through.

The spring installed inside the piston accumulates enough energy to open up the valve at any position. The oil circulation is independent and never gets into contact with the open air. A leak will generate a pressure loss in the circuit. All the moving parts are in permanent contact with the oil. Blockage and corrosion are very unlikely.

FLOW CHARACTERISTICS

The **HYDROVEX® Turbo Flow Regulator** operates in dry time without the help of the hydraulic system and knife gate, whatever the flow setting might be. The “S” shaped curve in the lower portion of the graph is caused by the hydraulic behavior of the vortex regulator.

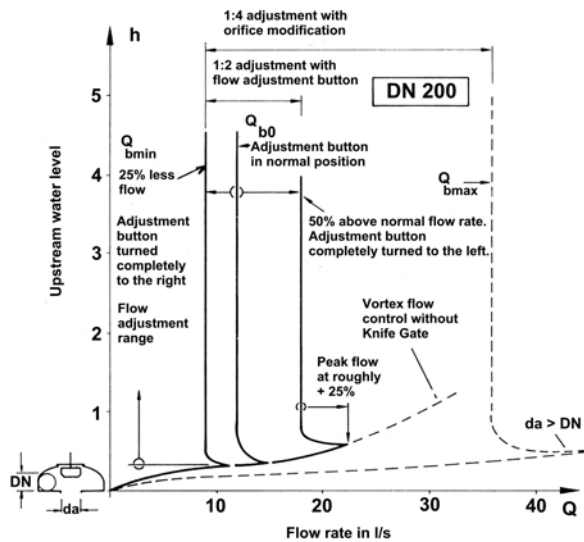


Figure 3: *HYDROVEX® Turbo Flow curve*

If the hydraulic circuit is activated, the through flow becomes constant, irrelevant of the upstream head. The flow curve shows a progression from 0 to design flow, typical of vortex flow regulators, then a slight “overshoot”, hard to notice in practice and a vertical progression of the flow once the knife gate valve is throttling the flow. The passage from vortex to knife gate control is very fast.

Figure 3 shows a series of flow curves. In dry time conditions, the turbo-regulator does not create any back up and the flow passes right through without much headloss.

SETTING THE FLOW

The **HYDROVEX® Turbo** Flow Regulator is a real flow control system. Consequently, the design flow value can be pre-set. We can achieve that by one of two approaches.

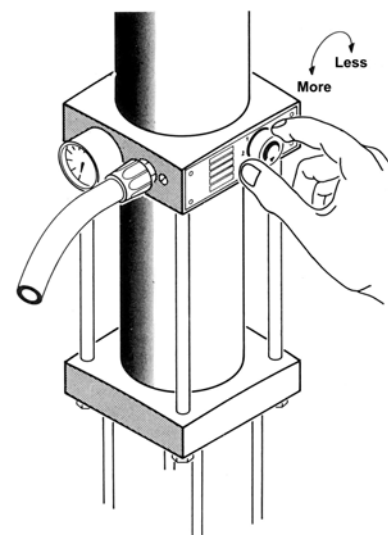


Figure 4: *Flow adjustment*

In the hydraulic control block, there is a pressure release valve (see **Figure 1**). The more this valve is opened; the more velocity is required from the turbine to close the piston. The pressure release valve is gauged and pre-set in our shop before delivery. If you then want to adjust the flow in the field, you must readjust the unit by using the pressure adjustment button (see **Figure 4**).

The vortex flow regulator is supplied with a removal outlet orifice. The diameter of the outlet orifice sets the flow capacity of the unit. If the outlet orifice is removed or changed, the flow setting of the unit is automatically changed.

If these two adjustment possibilities are used at the same time, the flow can be adjusted in ratio of 1 to 4. **Table 1** shows the operating limits of the turbo-regulators.

| Nominal Diameter DN (mm/inches) | Vortex regulator type | Q _{bmin} (l/s / gpm) | Q _{b0} (l/s / gpm) | Q _{bmax} (l/s / gpm) |
|------------------------------------|--------------------------|----------------------------------|--------------------------------|----------------------------------|
| 150 / 6" | TUR 5 | 4,5 / 71 | 6,0 / 95 | 18,0 / 285 |
| 200 / 8" | TUR 5 | 9,0 / 143 | 12,0 / 190 | 36,0 / 570 |
| 250 / 10" | TUR 4 | 18,0 / 285 | 24,0 / 380 | 72,0 / 1141 |

Table 1: Flow capacity of the HYDROVEX® Turbo Flow Regulator

MATERIAL AND GUARANTY

The **HYDROVEX® Turbo Flow Regulator** and the knife gate valve are in 304 stainless steel and PVC. The piston is stainless steel, the hydraulic pump aluminum and the turbine PVC. The equipment, its components and adjustments, are guaranteed for two years.

INSTALLATION

The **HYDROVEX® Turbo Flow Regulator** is installed in a dry chamber, downstream from the retention portion of the system. The unit is supplied with all components (supports, wall thimbles, knife gates, bypass, etc.). The design flow will be set in our shop and does not require a new adjustment. The culvert and finishing concrete work is performed after the installation of the unit.

John Meunier Inc.

ISO 9001 : 2000

Head Office

4105 Sartelon
 Saint-Laurent (Quebec) Canada H4S 2B3
 Tel.: 514-334-7230 www.johnmeunier.com
 Fax: 514-334-5070 cs@johnmeunier.com

Ontario Office

2000 Argentia Road, Plaza 4, Unit 430
 Mississauga (Ontario) Canada L5N 1W1
 Tel.: 905-286-4846 www.johnmeunier.com
 Fax: 905-286-0488 ontario@johnmeunier.com

USA Office

2209 Menlo Avenue
 Glenside, PA USA 19038
 Tel.: 412-417-6614 www.johnmeunier.com
 Fax: 215-885-4741 astele@johnmeunier.com